

Revolutionizing Metal Processing and Production

*Reshoring of Western Metals Processing. Proprietary IP. Global Licensing.
Titanium & Critical Minerals.*

Temas Team

Kyler Hardy

EXECUTIVE CHAIRMAN & DIRECTOR

Tim Fernback, MBA, CPA, CMA

CEO & DIRECTOR

David Robinson, CPA, CA

CFO & DIRECTOR

David Caldwell

COO

Corporate Structure

36,916,269

Shares Outstanding

15,751,892

Warrants

3,511,500

Options

56,179,661

Fully Diluted

~24%

Insider Ownership

**As of August 28, 2025*

CSE: **TMAS** OTCQB: **TMASF** FRA: **26PO**

Temas is a Differentiated Metals Processing Business with Patented Metallurgical IP Processing Technology and Advanced TiO₂ Mining Exploration Assets



Patented Metallurgical Technology:

Owns 11 novel process patents (Regenerative Chloride Leach – RCL), validated through pilot studies producing 99.8% purity TiO₂.



Strategic North American Exploration Projects: Fully-owned advanced mineral properties (La Blache & Lac Brule) in Quebec, Canada, featuring substantial inferred resources and established infrastructure.



Global Joint Venture Potential
Actively pursuing Licensing or Partnering and partnership deals with mining companies in Australia, Indonesia, the USA, and Canada, enabling immediate revenue streams



Significant Cost Reduction & Sustainability:

Verified 59.2%–69.7% lower production costs than industry standards, driven by closed-loop reagent recycling and reduced environmental footprint.



Robust ESG Commitment
Technology significantly reduces carbon emissions and environmental impact, supported by proactive local community and indigenous stakeholder engagement.



Experienced Leadership & Attractive Valuation:

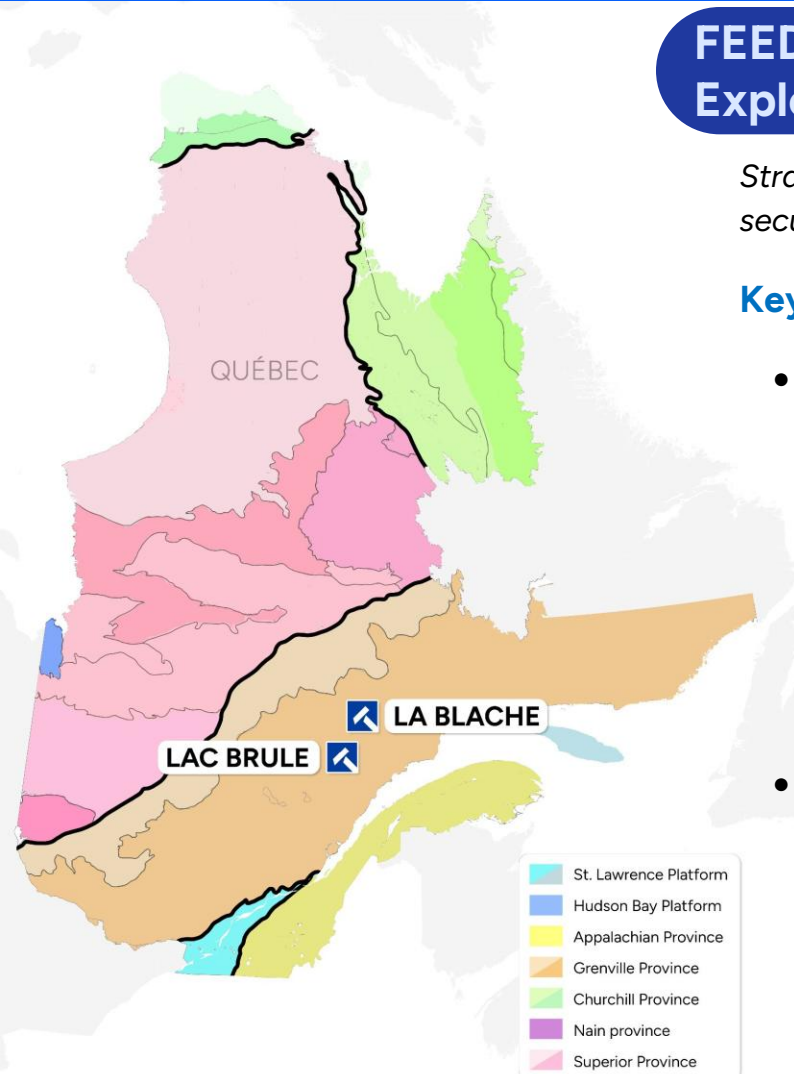
Proven management team skilled in commercializing complex metallurgical projects, presenting investors an undervalued opportunity with clear near-term catalysts.

FEEDSTOCK: North American Mineral Exploration Assets

Strategically positioned exploration projects focused on securing critical mineral supply.

Key Highlights:

- **La Blache Project (Quebec):**
 - 122 mineral claims (~7,000 hectares), inferred resource of 208.5 Mt @16.5% TiO₂ Eq., significant exploration potential confirmed by previous drilling.
 - Plans include additional HQ diamond drilling and resource upgrade to Measured and Indicated status.
- **Lac Brule Project (Quebec):**
 - 36 mineral claims, high-grade hemo-ilmenite deposit with areas up to 34% TiO₂.
 - Immediate development plans aimed at reaching a Preliminary Economic Analysis (PEA) stage by 2026.



TECH: Metallurgical IP and Technology Licensing Business

Patented metallurgical IP delivering superior operational economics and environmental performance.

Key Highlights:

- Temas **owns 11 novel process patents**, known as Regenerative Chloride Leach ("RCL") technology, providing consistent benefits transferable to new minerals. This is a **Platform Technology in Metallurgical Processing**.
- **Verified Significant Cost Reduction:** over 65% validated for TiO₂ processing, due to reagent recycling, optimized recovery, and lower energy use.
- RCL technology has **demonstrated the capability to produce high-quality 99.8% TiO₂** from pilot studies.
- **Temas is actively pursuing global licensing opportunities**, with third-party companies currently evaluating Temas IP for potential operations in Indonesia, Australia, and North America.